

Coal Combustion Products Partnership (C²P²)



COAL COMBUSTION
PRODUCTS PARTNERSHIP

What are coal combustion products?

Coal combustion products (CCPs) are generated from burning coal in coal-fired power plants. CCPs include fly ash, bottom ash, boiler slag, and flue gas desulfurization gypsum.

What are the benefits of using CCPs and why is EPA creating the Coal Combustion Products Partnership?

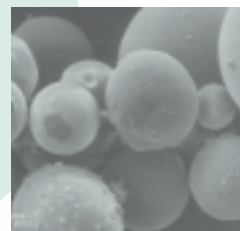
There are significant environmental, economic, and performance benefits from using CCPs in a number of applications, which is why EPA is sponsoring the C²P² Program to further their beneficial use.

Environmental benefits can include reduced greenhouse gas emissions, reduced CCP disposal in landfills and surface impoundments, and reduced environmental impacts from the excavation of borrow or other materials. CCP users should check with state agencies regarding any environmental or other requirements.

Economic benefits can include reduced costs associated with managing coal ash and slag disposal, potential revenue

from the sale of ash, and savings from using CCPs in place of other more costly materials.

Performance benefits are possible due to the physical and chemical characteristics of CCPs and include greater resistance to chemical attack, increased strength, and improved workability when fly ash is used to replace or supplement portland cement in concrete. High coal ash content concrete is also used for long life pavements that are designed to last 50 years—twice the lifetime of conventional pavements.



What is the C²P² Program?

The Coal Combustion Products Partnership (C²P²) Program is a cooperative effort between EPA and various organizations to help promote the beneficial use of CCPs and the environmental benefits which can result from that beneficial use. The initiative includes three primary activities:

- A challenge program
- Development of environmental effects and benefits booklets focusing on coal ash use in the highway and building construction industries
- Support for the development of CCP use workshops

The C²P² Challenge Program

Like EPA's WasteWise Program, which promotes and recognizes participants for voluntary waste reduction activities, the C²P² Challenge Program focuses on the beneficial use of CCPs. This voluntary program will encourage organizations to participate as **Champions** and **Leaders**.

Champions will include generators and users of CCPs who, in joining the program, will develop and commit to goals for increasing CCP beneficial use or marketing of CCPs.

Leaders will include federal agencies, professional groups, and trade associations (such as the American Coal Ash Association and the Utility Solid Waste Activities Group) who, in joining the program, will work with their affiliated organizations to promote greater beneficial use and sale of

CCPs. **Champions** and **Leaders** will be eligible for awards recognizing their activities, particularly documented increases in CCP beneficial use.

EPA is developing a comprehensive Web site to support the C²P² Challenge Program. This site will include educational information and a calendar of program-related events, in addition to recognizing C²P² Program participants. The C²P² Web site is located at: <http://www.epa.gov/epaoswer/osw/conserve/c2p2/index.htm>

C²P² Program Registration Forms are available from the EPA contact listed below or can be downloaded from the C²P² Web site.

Environmental Effects and Benefits Booklets

EPA currently plans to develop two booklets outlining the environmental effects and benefits from the beneficial use of coal fly ash and other CCPs in certain applications. One booklet will focus on highway construction and the other will focus on cast-in-place concrete building construction. EPA expects to publish these booklets in 2003.

Workshops

EPA will work with the Federal Highway Administration, the Department of Energy, and the American Coal Ash Association to develop a series of workshops for users of CCPs such as highway departments and builders. The workshops will present the structural advantages of using CCPs in certain applications and the associated environmental benefits. EPA expects to begin workshop development in 2003.

This project is part of EPA's Resource Conservation Challenge.



C²P² Program Contact:

John Glenn, U.S. EPA, MISWD
(703) 308-0215
glenn.john@epa.gov

For more information about the C²P² Program, visit EPA's Web site at <http://www.epa.gov/epaoswer/osw/conserve/c2p2>

Solid Waste and Emergency Response (5305W)
EPA530-F-03-004
www.epa.gov/osw
January 2003